

TECHNOLOGY TO THE POINT



HAITIAN PLASTICS MACHINERY GROUP CO., LTD.  
No.1688, Haitian Road, Xiaogang, Beilun, Ningbo, Zhejiang, China 315801  
+ 86-574-8617 7005 (China)  
+ 86-574-8617 7242 (International)  
haitian@mail.haitian.com  
www.haitianpm.com

NINGBO HAITIAN HUAYUAN MACHINERY CO.,LTD.  
No.1, Nanhuan Road, Export Processing Zone, Beilun, Ningbo, Zhejiang, China 315806  
+86-574-8617 7242  
+86-574-8622 1864  
haitian@mail.haitian.com  
www.haitianpm.com



# JU V /W SERIES

WIDE PLATEN  
TECHNICAL SPECIFICATION  
10,800 - 16,000 kN



# JU10800W V

MACHINE TYPE		JU10800W V													
CLAMPING UNIT	Clamping force	kN	10800												
	Mold opening stroke <sup>①</sup>	mm	1950/1350												
	Mold height min.	mm	600												
	Mold height max.	mm	1200												
	Total daylight max.	mm	2550												
	Dist. between tie-bars (H×V)	mm	1445×1195												
	Ejector stroke	mm	350												
	Ejector force	kN	230												
	Mold weight max. <sup>②</sup>	t	23												
INJECTION UNIT			6750			8950			11500				17500		
			A	B	C	A	B	C	A	B	C	D	A	B	C
	Screw diameter	mm	90	100	110	100	110	120	110	120	130	140	130	140	150
	Screw L/D ratio	L/D	24.4	22	20	24.2	22	20.2	26.2	24	22.2	20.6	24	22.3	20.8
	Injection volume (theoretical)	cm <sup>3</sup>	2990	3691	4466	4005	4846	5767	5226	6220	7300	8466	8362	9698	11133
	Injection weight (PS)	g	2720	3359	4064	3645	4410	5248	4756	5660	6643	7704	7609	8825	10131
	Injection rate (PS) <sup>③</sup>	g/s	809	999	1209	797	965	1148	884	1052	1235	1432	1281	1486	1705
	Injection pressure	MPa	193	156	129	196	162	136	189	159	135	117	185	160	139
	Injection pressure (max)	MPa	222	180	148	223	184	154	217	183	156	134	210	181	158
	Plasticizing rate (GPPS) <sup>④</sup>	g/s	103.4	127.1	150.2	120.7	144.8	167.8	123.0	142.0	164.0	187.0	168.0	192.0	220.0
	Plasticizing rate (HDPE) <sup>⑤</sup>	g/s	155.6	191.0	227.5	181.2	217.2	247.0	187.0	217.0	240.0	273.0	252.0	283.0	336.0
Screw speed	rpm	170			155			105				102			
OTHERS	Pump motor power	kW	127			127			135				195		
	Heater power	kW	71			83			104				123		
	Machine dimension (L×W×H) <sup>⑥</sup>	m	10.13×3.45×3.22			10.23×3.45×3.28			10.82×3.45×3.19				11.25×3.45×4.34		
	Machine weight	t	50			51			54				60		
	Hopper capacity (OP)	kg	50			50			50				50		
	Oil tank <sup>⑦</sup>	l	590			840			840				1670		

NOTE:

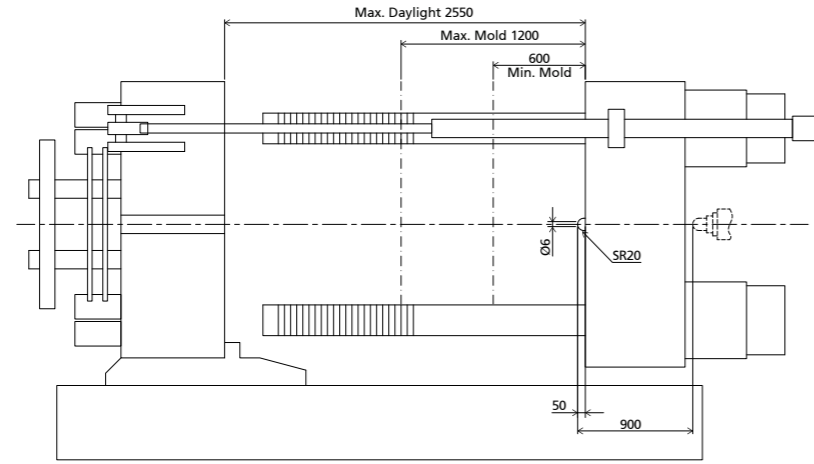
- ① With min. mold height / with max. mold height.
- ② Moving platen: 2/3 of max. mold weight.
- ③ The injection rate refers to the parameter in the differential injection condition.
- ④ Plasticizing capacity (GPPS): GB standard, with application of GPPS plasticizing capacity of 3-zone screws.
- ⑤ Plasticizing capacity (HDPE): Euromap 19, with application of HDPE plasticizing capacity of barrier screws.
- ⑥ The size is the net size of the machine, excluding the width of the feeding platform and the working platform.
- ⑦ The oil tank volume refers to the volume of the oil tank itself, excluding the volume in cylinder and pipeline. In this sense, the customer is advised to prepare the hydraulic oil according to 1.35 times of the oil tank volume.  
The above plasticizing capacity is for reference only.

We reserve the right to make changes as a result of further technical advantages.

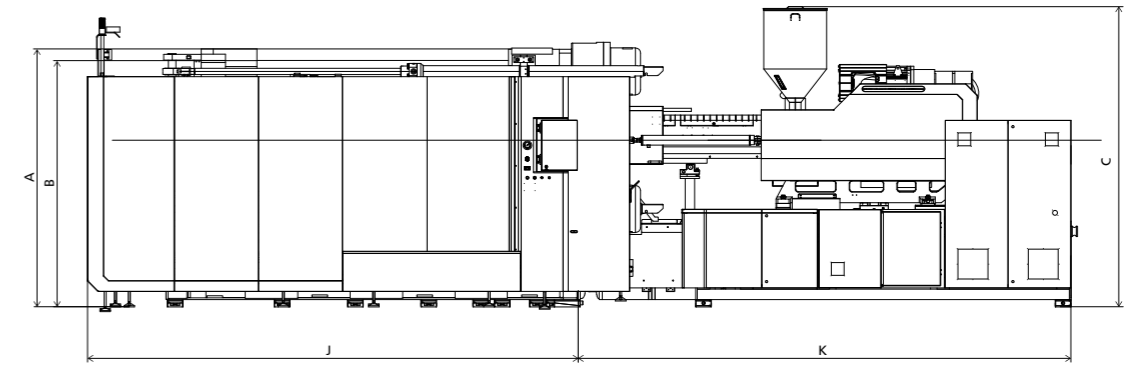


# DIMENSIONS JU10800W V

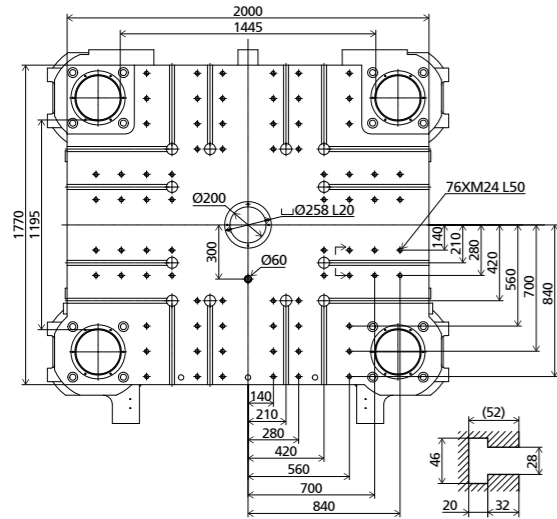
## CLAMPING UNIT



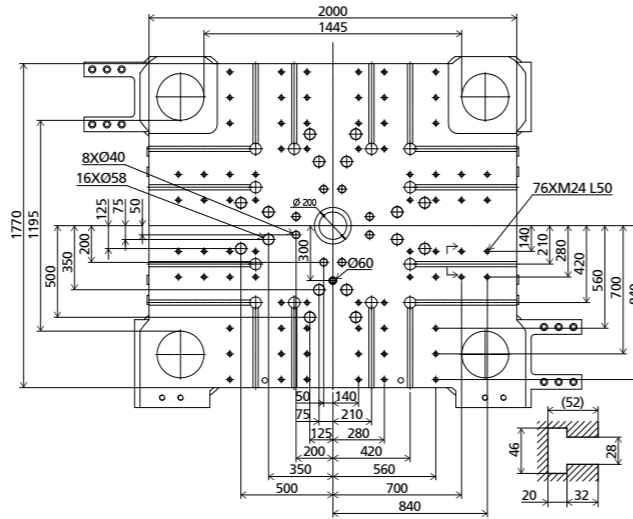
## FRONT VIEW



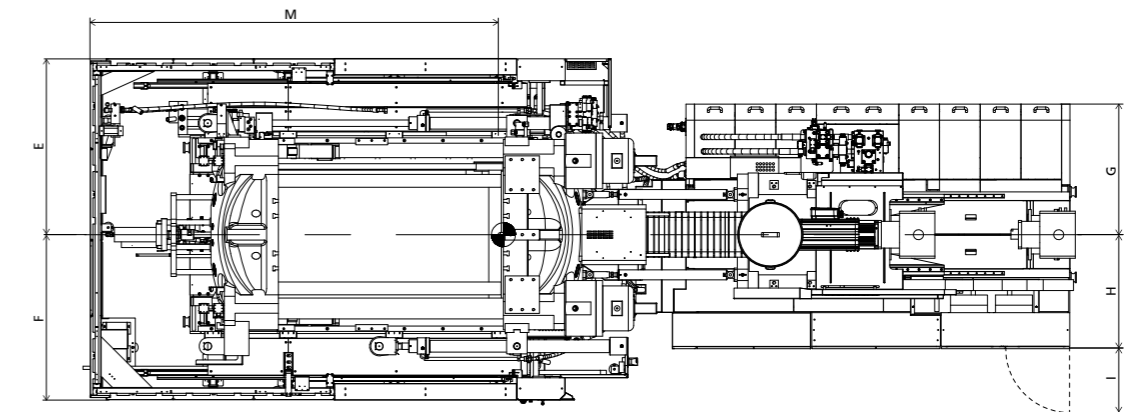
## FIXED PLATEN DIMENSIONS



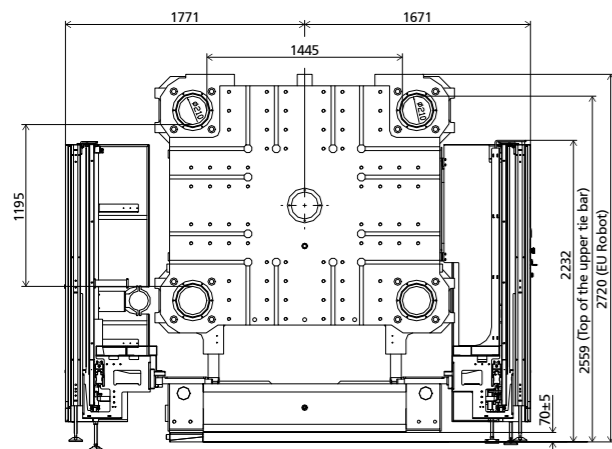
## MOVING PLATEN DIMENSIONS



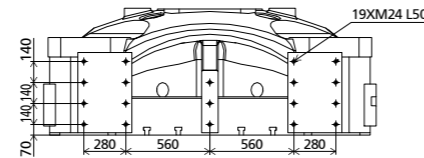
## TOP VIEW



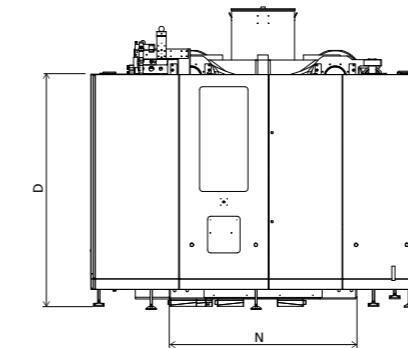
## ROBOT MECHANICAL INTERFACE



## ROBOTTOP VIEW FIXED PLATEN



## SIDE VIEW



## STANDARD

	INJECTION UNIT									DIMENSIONS (mm)			
	A	B	C	D	E	F	G	H	I	J	K	M	N
<b>6750</b>	2720	2558	3214	2200	1771	1671	1218	1065	596	5109	4692	4339	2002
<b>8950</b>	2720	2558	3275	2200	1771	1671	1218	1065	596	5109	4792	4339	2002
<b>11500</b>	2720	2558	3190	2200	1771	1671	1308	1215	596	5109	5378	4339	2002
<b>17500</b>	2720	2558	4338	2200	1771	1671	1875	1323	796	5109	5805	4339	2002



# JU13000W V

MACHINE TYPE			JU13000W V										
CLAMPING UNIT	Clamping force	kN	13000										
	Mold opening stroke <sup>①</sup>	mm	2550/1950										
	Mold height min.	mm	700										
	Mold height max.	mm	1300										
	Total daylight max.	mm	3250										
	Dist. between tie-bars (H×V)	mm	1595×1310										
	Ejector stroke	mm	400										
	Ejector force	kN	230										
	Mold weight max. <sup>②</sup>	t	33										
INJECTION UNIT			8950			11500				17500			
			A	B	C	A	B	C	D	A	B	C	
	Screw diameter	mm	100	110	120	110	120	130	140	130	140	150	
	Screw L/D ratio	L/D	24.2	22	20.2	26.2	24	22.2	20.6	24	22.3	20.8	
	Injection volume (theoretical)	cm <sup>3</sup>	4005	4846	5767	5226	6220	7300	8466	8362	9698	11133	
	Injection weight (PS)	g	3645	4410	5248	4756	5660	6643	7704	7609	8825	10131	
	Injection rate (PS) <sup>③</sup>	g/s	855	1034	1231	884	1052	1235	1432	1281	1486	1705	
	Injection pressure	MPa	196	162	136	189	159	135	117	185	160	139	
	Injection pressure (max)	MPa	223	184	154	217	183	156	134	210	181	158	
	Plasticizing rate (GPPS) <sup>④</sup>	g/s	120.7	144.8	167.8	123.0	142.0	164.0	187.0	168.0	192.0	220.0	
	Plasticizing rate (HDPE) <sup>⑤</sup>	g/s	181.2	217.2	247.0	187.0	217.0	240.0	273.0	252.0	283.0	336.0	
Screw speed	rpm	155			105				102				
OTHERS	Pump motor power	kW	135			135				195			
	Heater power	kW	83			104				123			
	Machine dimension (L×W×H) <sup>⑥</sup>	m	11.37×3.73×3.31			11.90×3.73×3.23				12.52×3.73×4.37			
	Machine weight	t	64			67				73			
	Hopper capacity (OP)	kg	50			50				50			
	Oil tank <sup>⑦</sup>	l	840			840				1670			

NOTE:

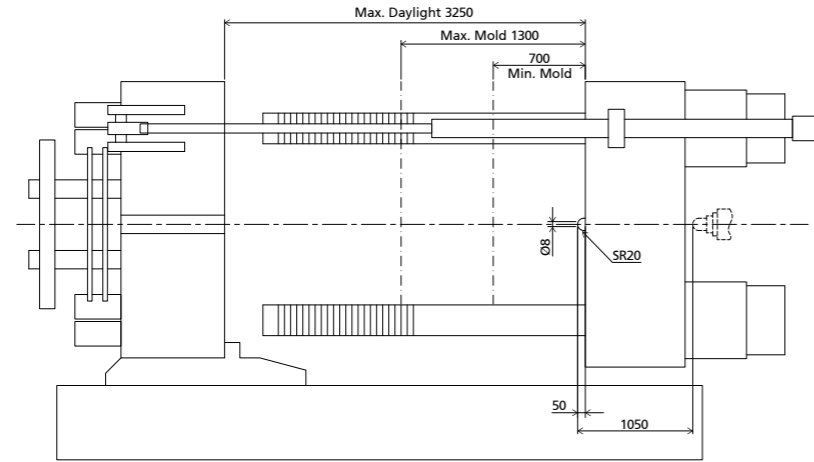
- ① With min. mold height / with max. mold height.
- ② Moving platen: 2/3 of max. mold weight.
- ③ The injection rate refers to the parameter in the differential injection condition.
- ④ Plasticizing capacity (GPPS): GB standard, with application of GPPS plasticizing capacity of 3-zone screws.
- ⑤ Plasticizing capacity (HDPE): Euromap 19, with application of HDPE plasticizing capacity of barrier screws.
- ⑥ The size is the net size of the machine, excluding the width of the feeding platform and the working platform.
- ⑦ The oil tank volume refers to the volume of the oil tank itself, excluding the volume in cylinder and pipeline. In this sense, the customer is advised to prepare the hydraulic oil according to 1.35 times of the oil tank volume.  
The above plasticizing capacity is for reference only.

We reserve the right to make changes as a result of further technical advantages.

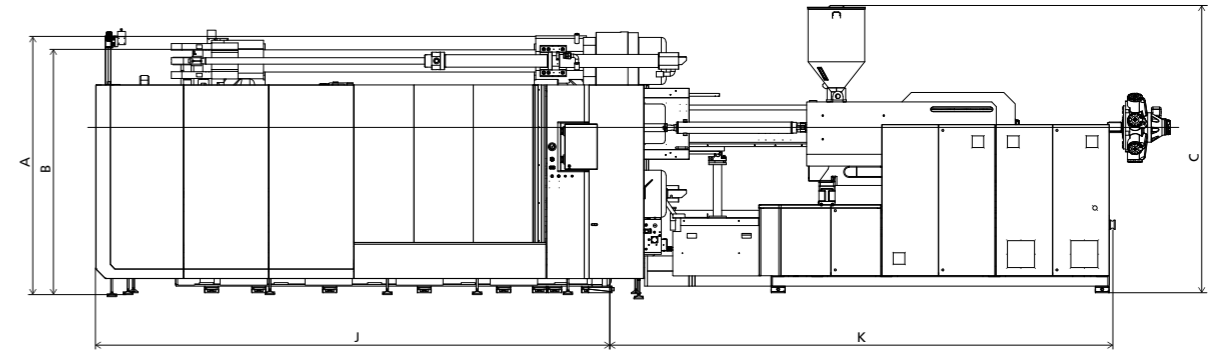


# DIMENSIONS JU13000V

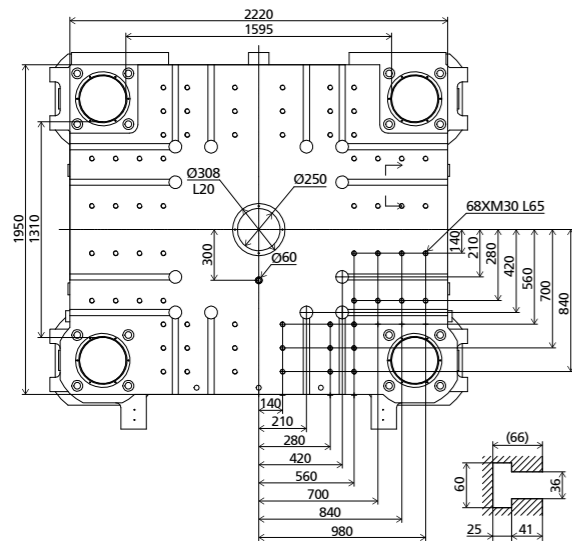
## CLAMPING UNIT



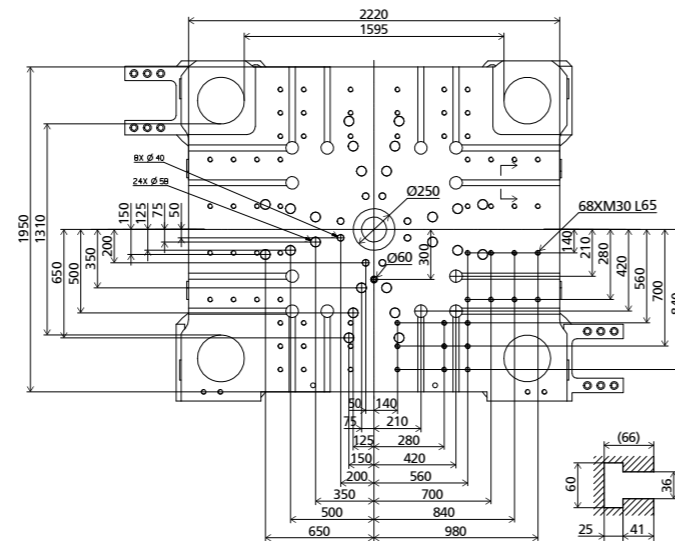
## FRONT VIEW



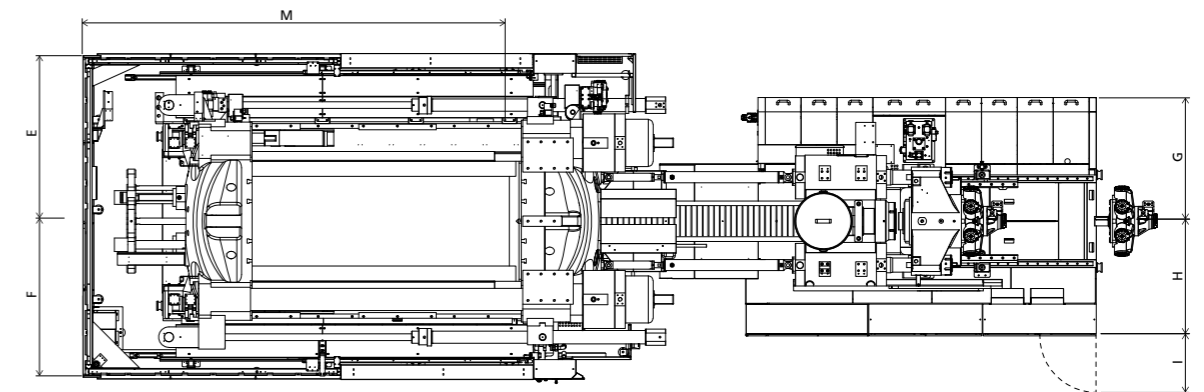
## FIXED PLATEN DIMENSIONS



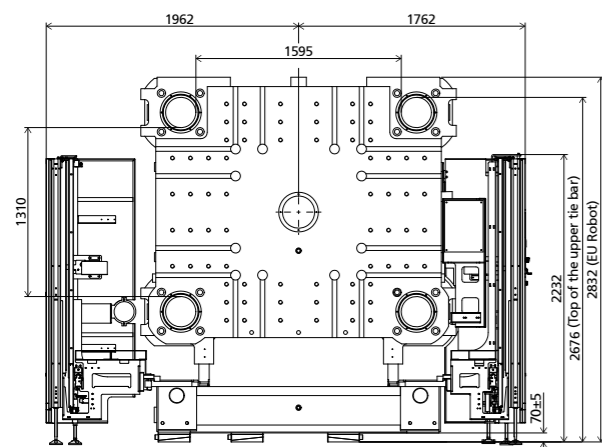
## MOVING PLATEN DIMENSIONS



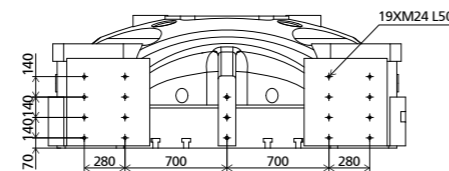
## TOP VIEW



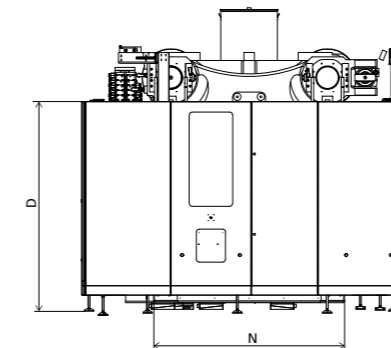
## ROBOT MECHANICAL INTERFACE



## ROBOTTOP VIEW FIXED PLATEN



## SIDE VIEW



## STANDARD

	INJECTION UNIT										DIMENSIONS (mm)			
	A	B	C	D	E	F	G	H	I	J	K	M	N	
8950	2832	2676	3310	2200	1962	1762	1218	1065	596	5976	4842	5121	2184	
11500	2832	2676	3225	2200	1962	1762	1308	1215	596	5976	5378	5121	2184	
17500	2832	2676	4363	2200	1962	1762	1875	1323	796	5976	5755	5121	2184	



# JU16000W V

MACHINE TYPE			JU16000W V												
CLAMPING UNIT	Clamping force	kN	16000												
	Mold opening stroke <sup>①</sup>	mm	2600/1850												
	Mold height min.	mm	750												
	Mold height max.	mm	1500												
	Total daylight max.	mm	3350												
	Dist. between tie-bars (H×V)	mm	1915×1465												
	Ejector stroke	mm	450												
	Ejector force	kN	450												
	Mold weight max. <sup>②</sup>	t	40												
INJECTION UNIT			11500				17500			22500				32500	
			A	B	C	D	A	B	C	A	B	C	D	A	B
	Screw diameter	mm	110	120	130	140	130	140	150	140	150	160	170	160	170
	Screw L/D ratio	L/D	26.2	24	22.2	20.6	24	22.3	20.8	24	22.4	21	19.8	24	22.6
	Injection volume (theoretical)	cm <sup>3</sup>	5226	6220	7300	8466	8362	9698	11133	10467	12016	13672	15434	17492	19747
	Injection weight (PS)	g	4756	5660	6643	7704	7609	8825	10131	9525	10935	12441	14045	15918	17970
	Injection rate (PS) <sup>③</sup>	g/s	884	1052	1235	1432	1281	1486	1705	1352	1552	1766	1994	1559	1761
	Injection pressure	MPa	189	159	135	117	185	160	139	185	161	141	125	160	142
	Injection pressure (max)	MPa	217	183	156	134	210	181	158	211	184	161	143	180	159
	Plasticizing rate (GPPS) <sup>④</sup>	g/s	123.0	142.0	164.0	187.0	168.0	192.0	220.0	155.0	176.0	196.0	222.0	\	\
	Plasticizing rate (HDPE) <sup>⑤</sup>	g/s	187.0	217.0	240.0	273.0	252.0	283.0	336.0	243.0	294.0	303.0	334.0	280.0	310.0
Screw speed	rpm	105				102			85				72		
OTHERS	Pump motor power	kW	135				195			205				205	
	Heater power	kW	104				123			137				189	
	Machine dimension (L×W×H) <sup>⑥</sup>	m	11.52×4.03×3.45				12.70×4.03×4.40			12.93×4.03×4.40				13.88×4.03×4.40	
	Machine weight	t	82				86			91				94	
	Hopper capacity (OP)	kg	400				400			400				400	
Oil tank <sup>⑦</sup>	l	840				1670			1670				1670		

NOTE:

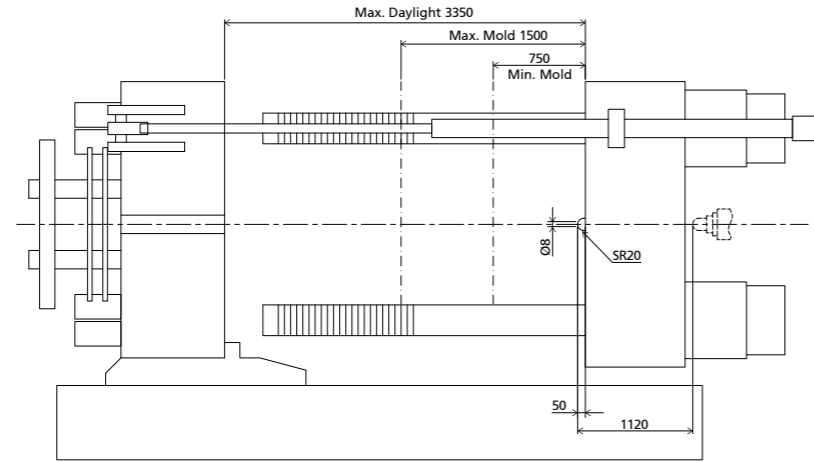
- ① With min. mold height / with max. mold height.
- ② Moving platen: 2/3 of max. mold weight.
- ③ The injection rate refers to the parameter in the differential injection condition.
- ④ Plasticizing capacity (GPPS): GB standard, with application of GPPS plasticizing capacity of 3-zone screws.
- ⑤ Plasticizing capacity (HDPE): Euromap 19, with application of HDPE plasticizing capacity of barrier screws.
- ⑥ The size is the net size of the machine, excluding the width of the feeding platform and the working platform.
- ⑦ The oil tank volume refers to the volume of the oil tank itself, excluding the volume in cylinder and pipeline. In this sense, the customer is advised to prepare the hydraulic oil according to 1.35 times of the oil tank volume.  
The above plasticizing capacity is for reference only.

We reserve the right to make changes as a result of further technical advantages.

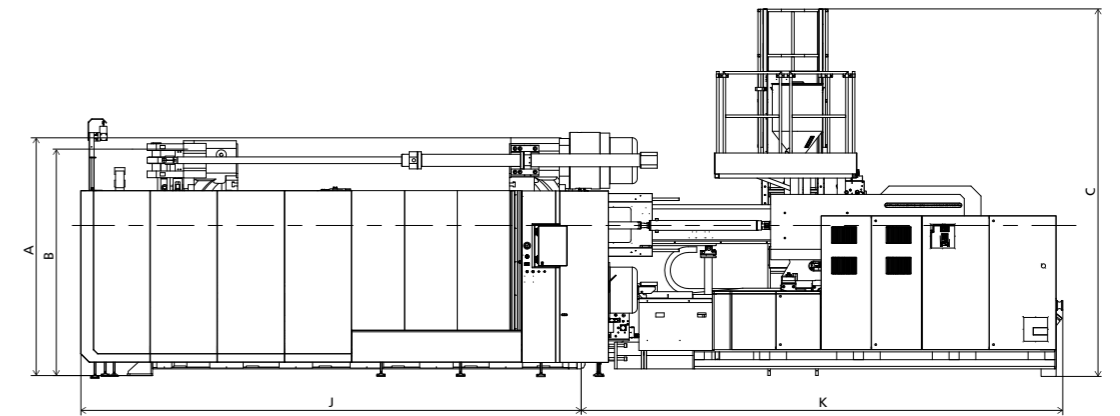


# DIMENSIONS JU16000 V

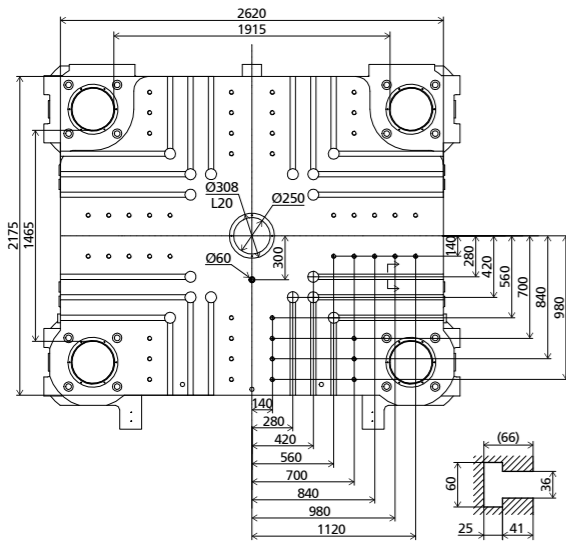
## CLAMPING UNIT



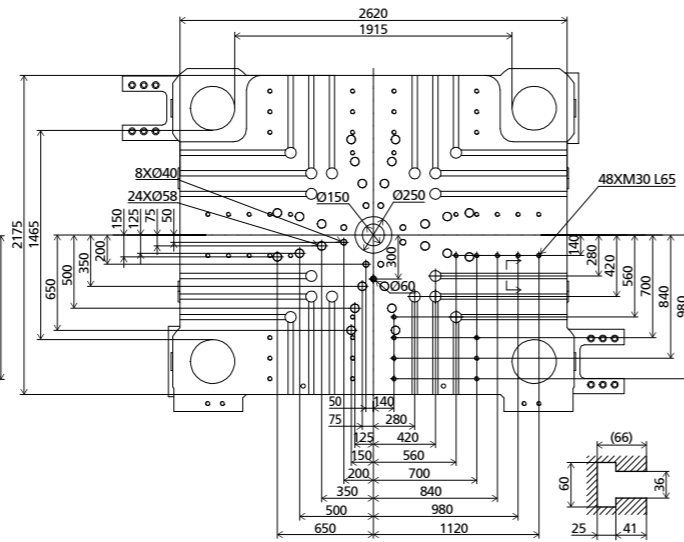
## FRONT VIEW



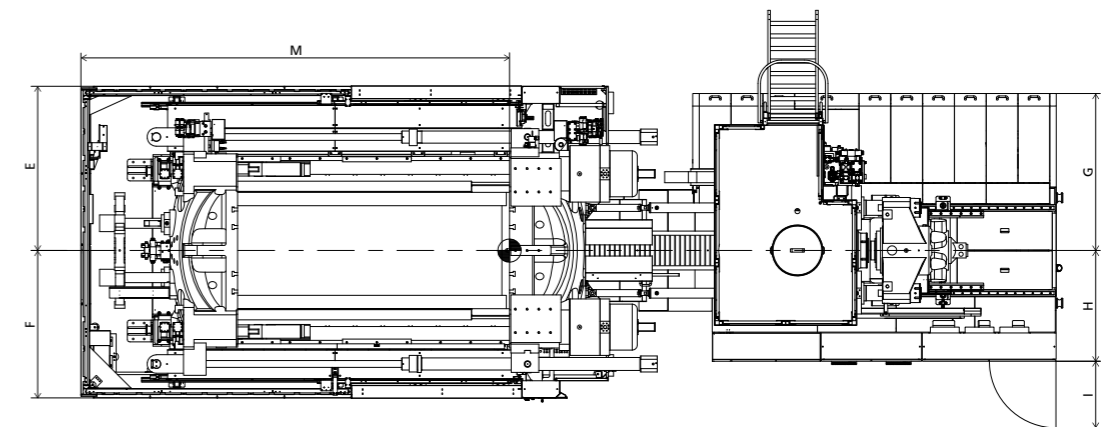
## FIXED PLATEN DIMENSIONS



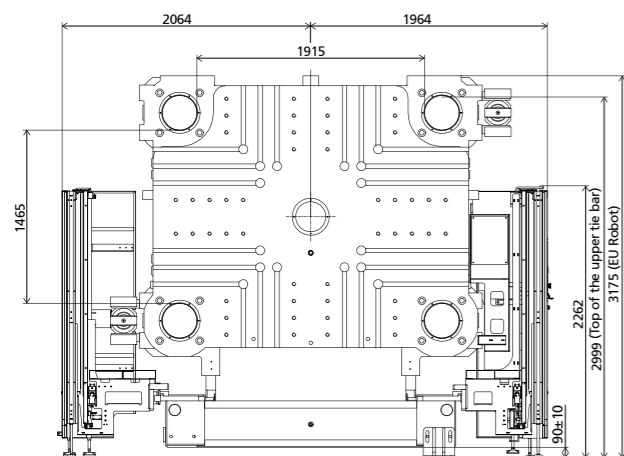
## MOVING PLATEN DIMENSIONS



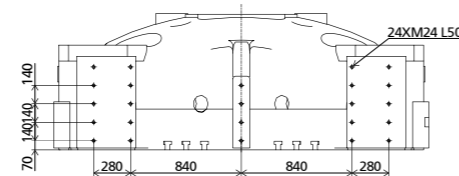
## TOP VIEW



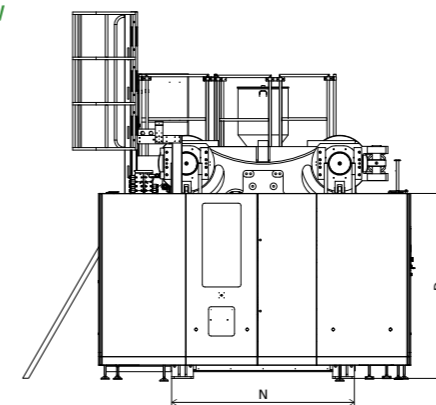
## ROBOT MECHANICAL INTERFACE



## ROBOTTOP VIEW FIXED PLATEN



## SIDE VIEW



## STANDARD

	INJECTION UNIT									DIMENSIONS (mm)			
	A	B	C	D	E	F	G	H	I	J	K	M	N
<b>11500</b>	3175	2999	3445	2220	2064	1964	1308	1215	596	6356	5378	5371	2388
<b>17500</b>	3175	2999	4393	2220	2064	1964	1875	1323	796	6356	5755	5371	2388
<b>22500</b>	3175	2999	4393	2220	2064	1964	1935	1422	796	6356	6260	5371	2388
<b>32500</b>	3175	2999	4393	2220	2064	1964	1935	1422	796	6356	7278	5371	2388



# NOTE

---

1

2

3

4

5

6

7

8

9

10

1

2

3

4

5

6

7

8

9

10

1

2

3

4

5

6

7

8

9

10

1

2

3

4

5

6

7

8

9

10